

KOHR

BY ARSALAN A. KHAN

KOHR**LUXE**II

KOHR is a unique experience of contemporary, eccentric, clean lined furniture and home accessories inspired by the ever-changing living habits of humans. KOHR strives to create a distinct narrative for each collection. Established in 2014 by Arsalan Ahmad Khan in Islamabad, Pakistan. KOHR collaborates with local artisans in order to strive towards making unique and bespoke designs a reality. The highest quality of natural wood, mixed metals and semi-precious gemstones are used to create KOHR's luxury pieces.

Arsalan A. Khan

CREATIVE DIRECTOR

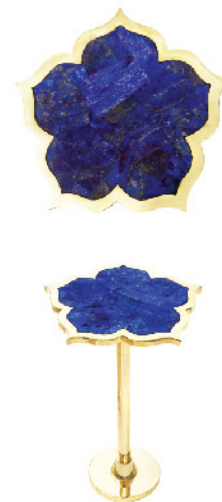
- +92 300 5550308
- inquiry@kohr.co.uk
- www.kohr.co.uk
- kohr_by_aak
- kohrbyaak
- kohrbyaak

CONTENT

Lotus Hostess Table	01
Seduction Hostess Table	02
Florentine Hostess Table	03
Boîte à Papillons	04
Intrecciato Hostess Table	05
Elementi Hostess Table	06
Papillon Lamp	07
Shard Console	08
Geometric Turquoise Mirror	09

Lotus Hostess Table

Here the stunning lapis, blooms into a mesmerizing lotus, while the anchoring gold brass stem adds to the mystery, against the contrasting deep blue.



Dia: 38.1cm
Height: 57.15cm
Weight: ~8kg





top(sq) 33X33cm
Height: 57.5cm
Weight: ~9kg

Seduction Hostess Table

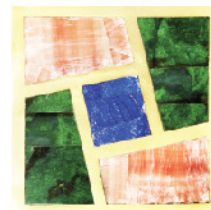
Tango for two, where mysterious nephrite and the blooming pink calcite, can't help but give into the gravitational pull.



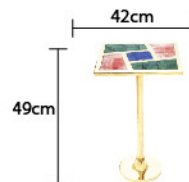
Florentine Hostess Table

An ode to Florence, where lapis represents the Arno River and the nephrite and calcite form the gardens and piazzas surrounding it.

03



top(sq): 33X33cm
Height: 57.15cm
Weight: ~9kg

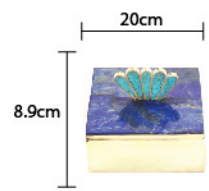




Boîte à Papillons

The butterfly box uses the magnificence of the many blues of lapis lazuli while contrasting it to the delicate brass coated turquoise wings.

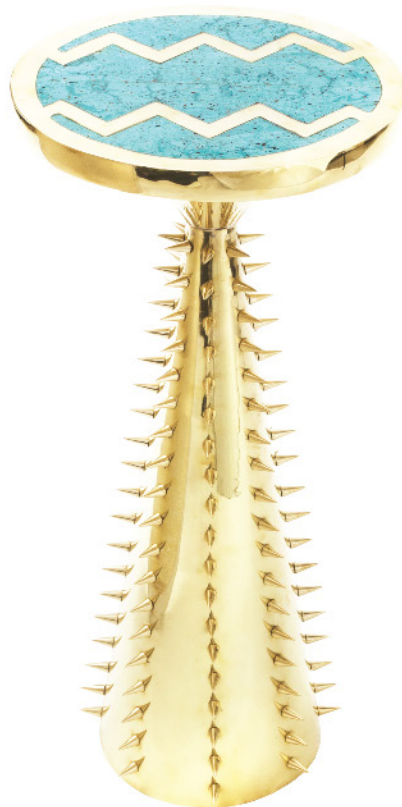
top(sq lid): 20X21.6cm
fan: 7.6X12.7cm
Height: 8.9cm
Weight: ~3kg



Intrecciato Hostess Table

The entrapped turquoise amongst the brass and its tentacles

05



Dia: 30.5cm
Height: 67.3cm
Weight: ~8.5kg





Dia 30.5cm
Height: 57.15cm
Weight: ~7kg

Elementi Hostess Table

This table echos the four elements of earth, the elements swirl, from turquoise, pink calcite and serpentine, to the stationary lapis lazuli.



Papillon Lamp

The perched butterfly underneath all the worlds golden glory. This lamp is a glorious brass masterpiece, with its intriguing serpentine and calcite butterfly.



Base :
Width: 40.6cm
Height: 8.9cm
Depth: 20.3cm

Shade :
Width: 45.7cm
Height: 29.2cm
Depth: 20.3cm

Body :
Width: 22.8cm
Height: 38.1cm
Depth: 5.1cm

Weight: ~13kg



45.7cm

76.2cm





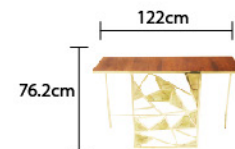
Shard Console

This delicate console deceives the eyes, with the powerful vivid serpentine shards holding the focus, while the fragile brass frame makes one wonder of its own quiet dominance.



Length: 122cm
Depth: 40.6cm
Height: 76.2cm
Weight: ~24kg

Shard-Panel :
Height: 76.2cm
Width: 58.4cm

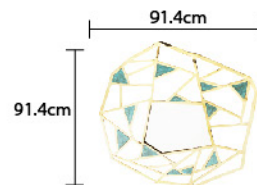




Width: 91.4cm
Height: 91.4cm
Weight: ~7kg

Geometric Turquoise Mirror

A unique mirror with angular qualities, embedded with turquoise.



KOHR by Arsalan A. Khan reserves all rights to this catalogue
and any further distribution or use of its contents maybe done
only with prior written consent.

www.Kohr.co.uk

