



SHAHI HAMAM
COLLECTION

KILMS BY KOHR



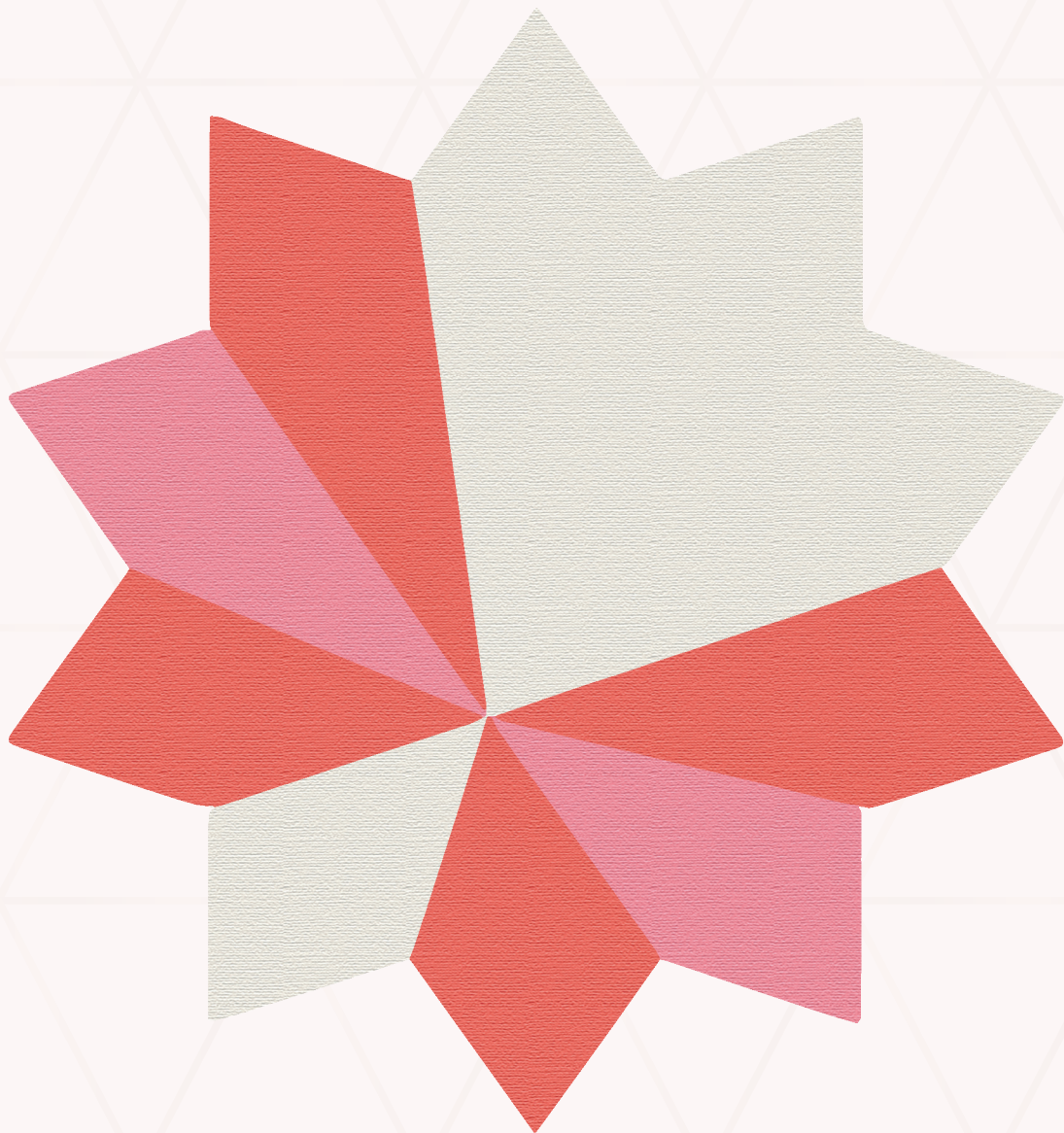
KILMS BY KOHR

Inspired from the great and recently restored Shahi Hamam, one of the the last surviving bath from the Mughal Empire. Built in the 17th Century, this building served as a persian style royal bath. Hamams were introduced in the sub-continent by the Mughals. The Shahi Hamam is one of the rare examples of this building style which is still prevalent today

Taking inspiration from the intricate shahi hamam's architecture and art. Kohr has designed its new collection from the dense embellishments, geometrical and floral motifs of the hamam's interior and exterior.

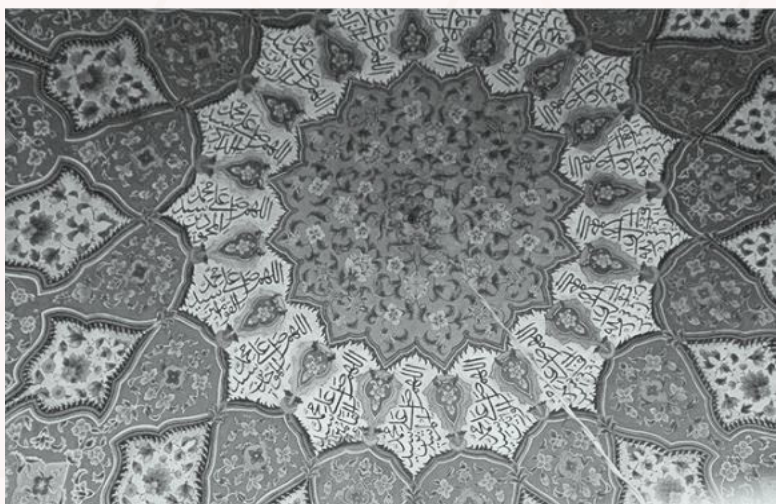
KSH1001

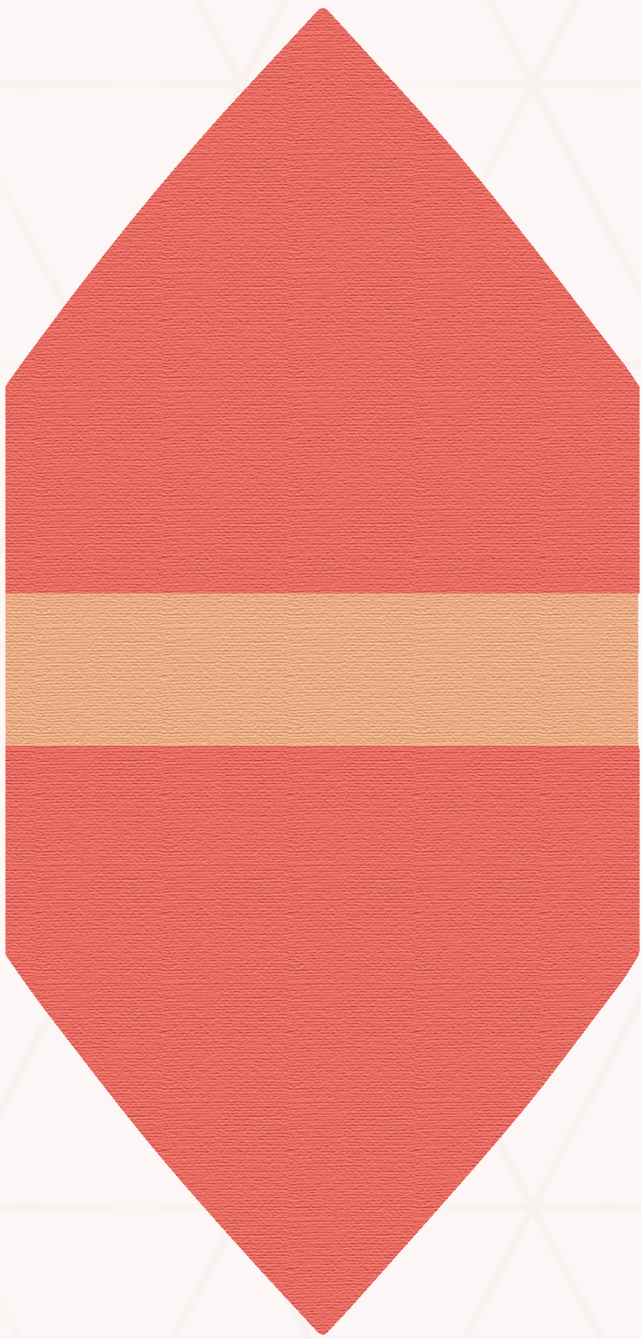
KILIMS BY KOHR



*nyoon la liya be-parwaah de naal
I've given my heart to an uncaring beloved*

Hand Made Kilim
100% Lamb Wool
150cm x 100cm
200cm x 150cm
240cm x 170cm
300cm x 200cm
Natural Vegetable Dye
*Also Available in custom made sizes

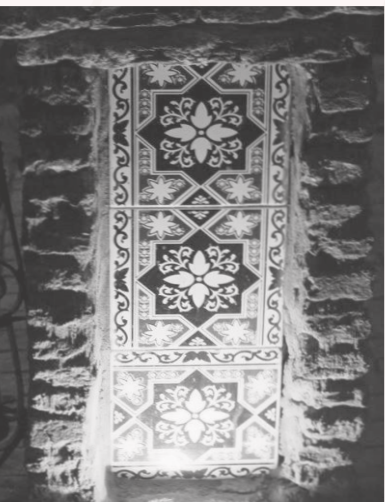




KSH1002

KILMS BY KOHR

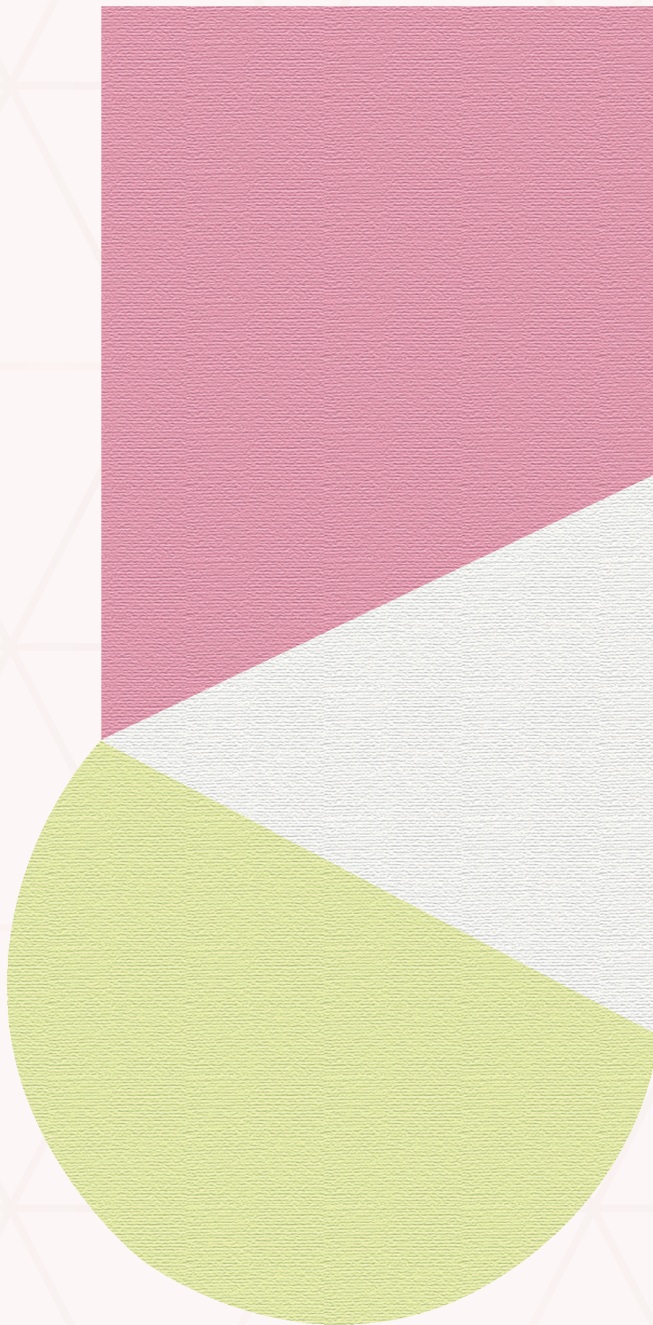
os deen duni de shaah de naal
To the sovereign of both this world and the next



150cm x 100cm
 200cm x 150cm
 240cm x 170cm
 300cm x 200cm
 Hand Made Kilim
 100% Lamb Wool
 Natural Vegetable Dye
 *Also Available in custom made sizes

KSH1003

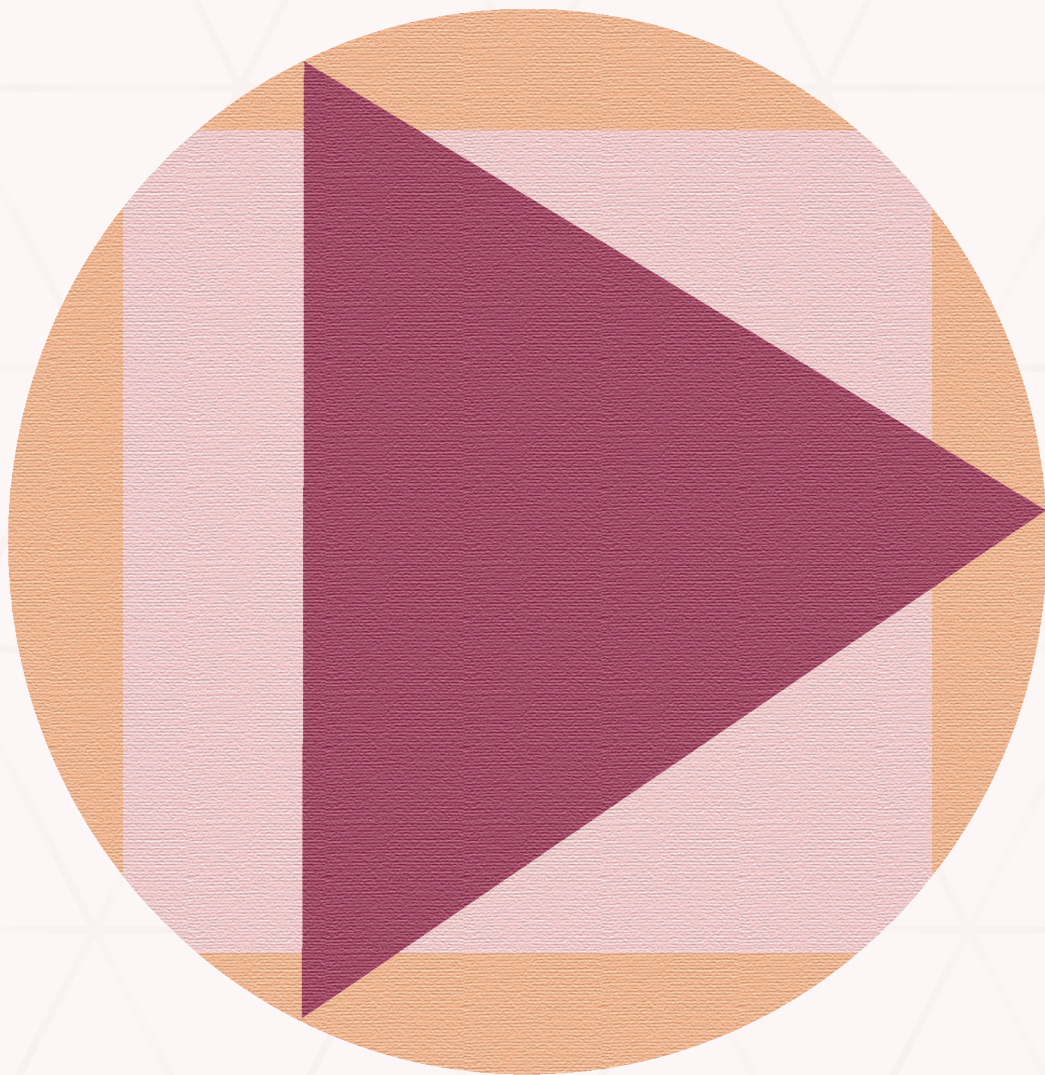
KILIMS BY KOHR



nadyon paar raanjhan da thaana
Far across the river is where my Ranjha lives

Hand Made Kilim
100% Lamb Wool
Natural Vegetable Dye
150cm x 100cm
200cm x 150cm
240cm x 170cm
300cm x 200cm
*Also Available in custom made sizes





KSH1004

KILMS BY KOHR

keeta kaul zaroori jaana
I made a pledge and must go to him



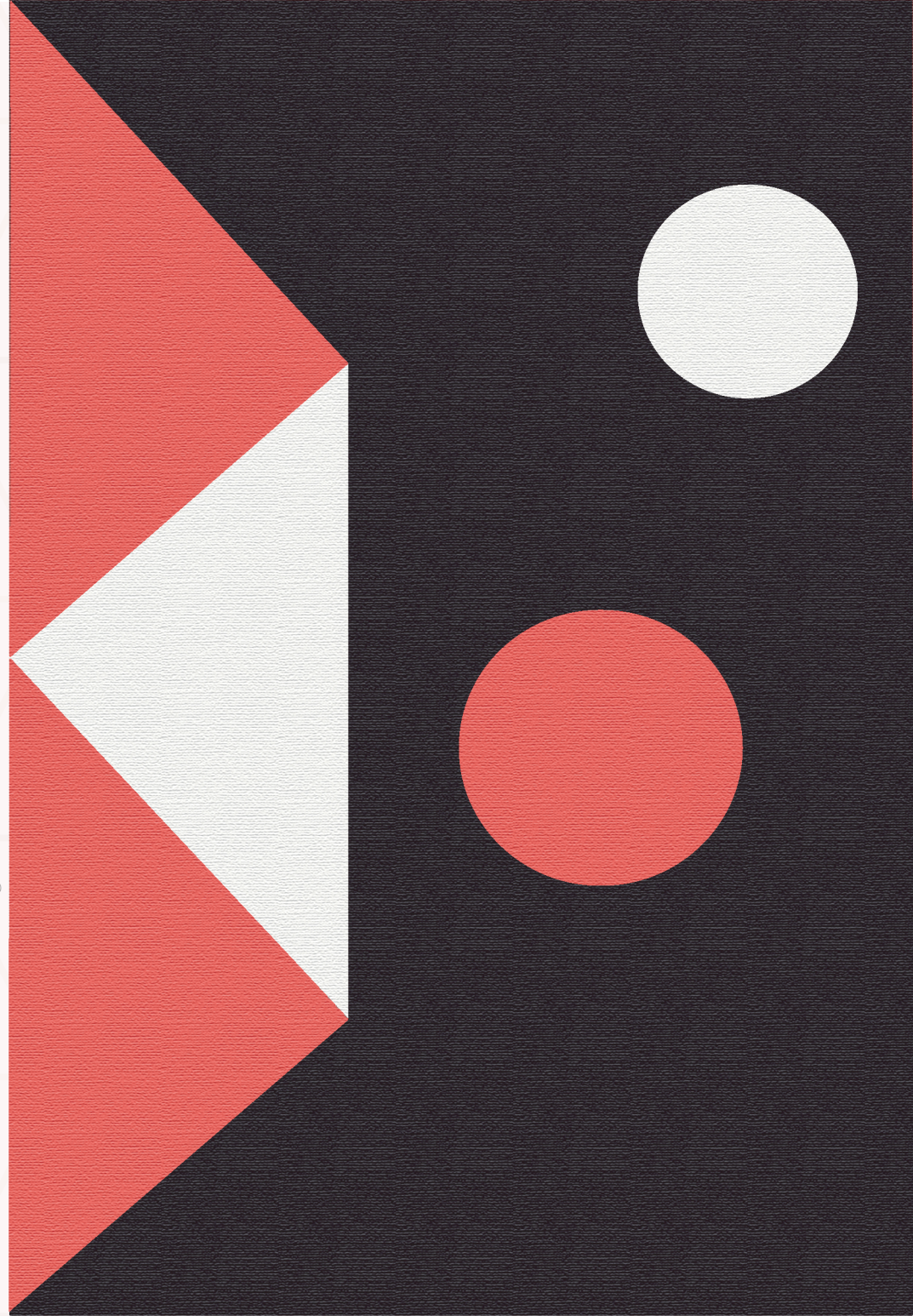
150cm x 100cm
 200cm x 150cm
 240cm x 170cm
 300cm x 200cm
 Hand Made Kilim
 100% Lamb Wool
 Natural Vegetable Dye

*Also Available in custom made sizes

KSH1005

KILIMS BY KOHR

mintaan karaan mallaah de naal – I beg the boatman to take me there



100% Pure Lamb Wool. Hand Made Kilim. Natural Vegetable Dye

150cm x 100cm

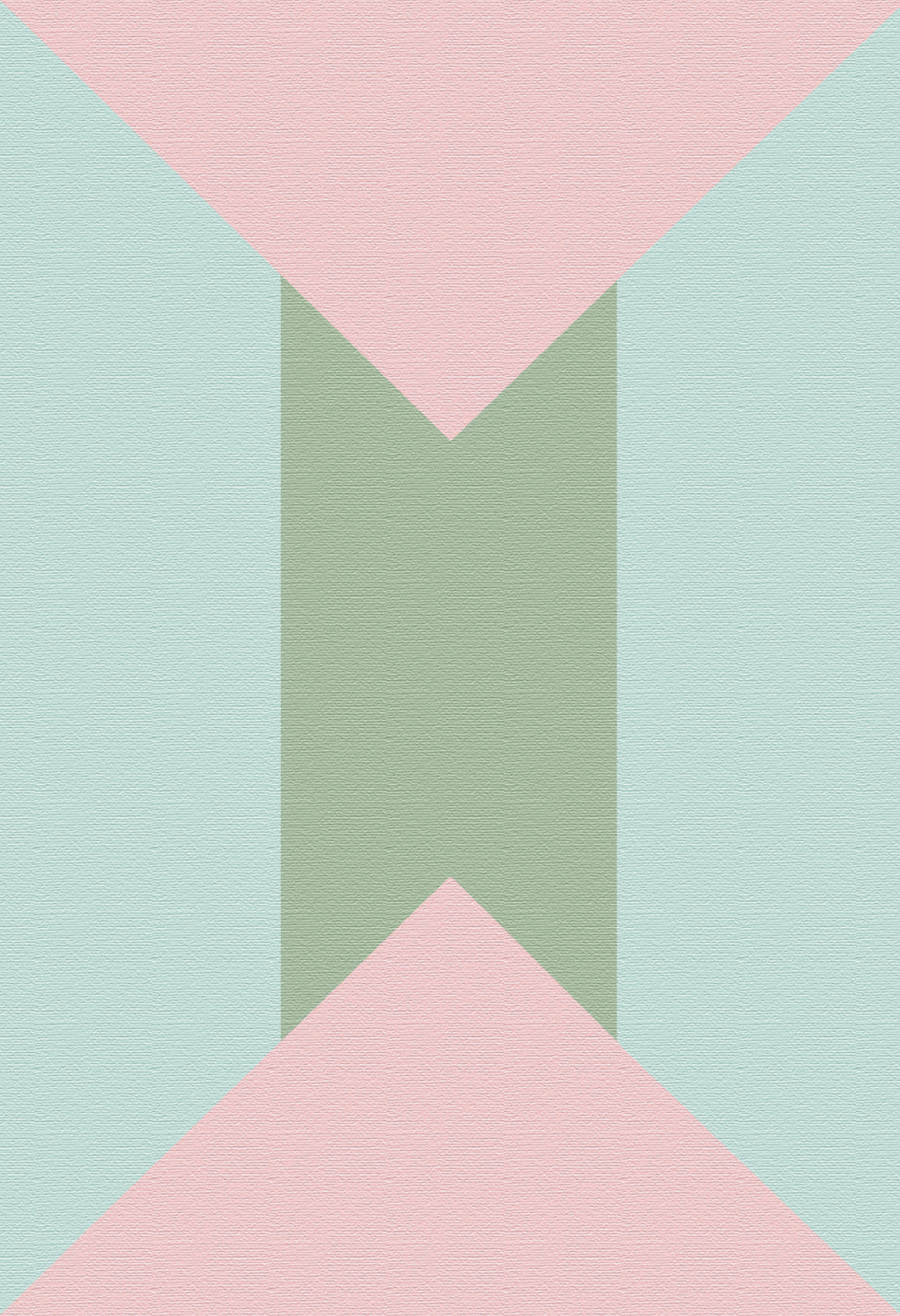
200cm x 150cm

240cm x 170cm

300cm x 200cm

*Also Available in custom made sizes





kahe husain faqeer nimaana – Shah Husain, the lowly beggar, says

KSH1006

KILMS BY KOHR

100% Pure Lamb Wool. Hand Made Kilim. Natural Vegetable Dye



150cm x 100cm

200cm x 150cm

240cm x 170cm

300cm x 200cm

*Also Available in custom made sizes

KSH1007

KILIMS BY KOHR

dunya chhor aakhar mar jaana – This world is temporary, we must die and leave it ultimately

100% Pure Lamb Wool. Hand Made Kilim. Natural Vegetable Dye

150cm x 100cm

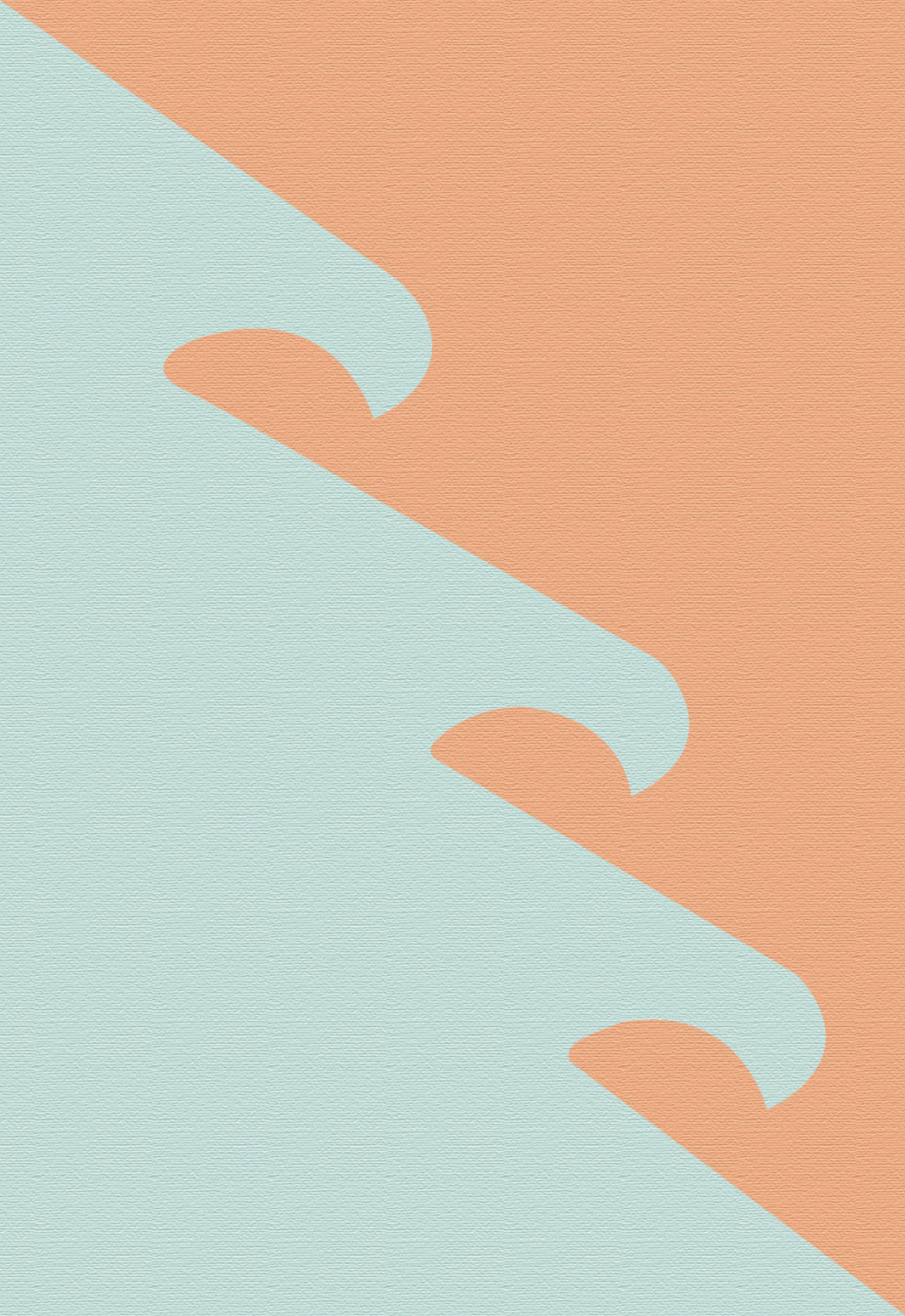
200cm x 150cm

240cm x 170cm

300cm x 200cm

*Also Available in custom made sizes





aurak kam allaah de naal – In the end, we are concerned with God alone

KSH1008

KILMS BY KOHR

100% Pure Lamb Wool. Hand Made Kiln. Natural Vegetable Dye



150cm x 100cm

200cm x 150cm

240cm x 170cm

300cm x 200cm

*Also Available in custom made sizes

KSH1009

nyoon la liya be-parwaah de naal – I've given my heart to an uncaring beloved

100% Pure Lamb Wool. Hand Made Kilim. Natural Vegetable Dye

150cm x 100cm

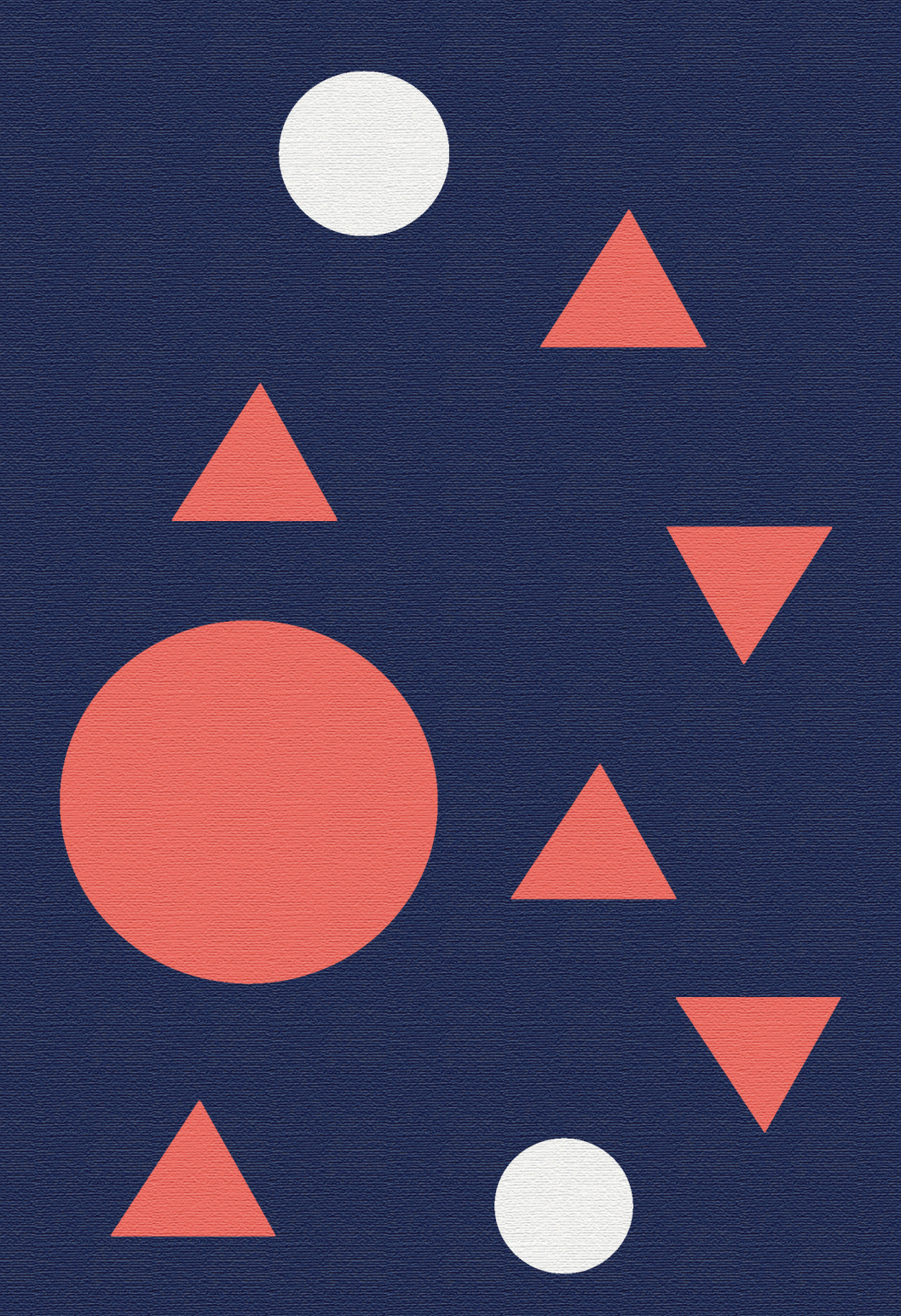
200cm x 150cm

240cm x 170cm

300cm x 200cm

*Also Available in custom made sizes





os deen duni de shaah de naal – To the sovereign of both this world and the next

KSH1010
KILMS BY KOHR

100% Pure Lamb Wool. Hand Made Kilim. Natural Vegetable Dye



150cm x 100cm

200cm x 150cm

240cm x 170cm

300cm x 200cm

*Also Available in custom made sizes

KSH101

nyoon la liya - haaye! - I've given my heart - Alas!

100% Pure Lamb Wool. Hand Made Kilm. Natural Vegetable Dye

150cm x 100cm

200cm x 150cm

240cm x 170cm

300cm x 200cm

*Also Available in custom made sizes



Credits

Neun Le Laya – Poetry by Kaavhish

Asra Shakeel, Arsalan A. Khan – Photography

Special Thanks to the weavers of Quetta, Pakistan for
their dedication and hardwork for these masterpieces

For Trade Inquires

+92 300 555 0308

✉ inquiry@kohr.co.uk

🌐 www.kohr.co.uk

📷 [kohrbyaak](https://www.instagram.com/kohrbyaak)

📘 [kohrbyaak](https://www.facebook.com/kohrbyaak)

