



KOHR **GEMSTONE**

KOHR is a unique experience of contemporary, eccentric, clean lined furniture and home accessories inspired by the ever-changing living habits of humans. KOHR strives to create a distinct narrative for each collection. Established in 2014 by Arsalan Ahmad Khan in Islamabad, Pakistan. KOHR collaborates with local artisans in order to strive towards making unique and bespoke designs a reality. The highest quality of natural wood, mixed metals and semi-precious gemstones are used to create KOHR's luxury pieces.

Arsalan A. Khan

CREATIVE DIRECTOR

+92 300 5550308
inquiry@kohr.co.uk
www.kohr.co.uk
kohr_by_aak
kohrbyaak
kohrbyaak

CONTENT

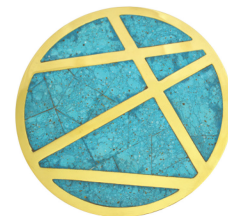
Turquoise Hostess Table	01
Nephrite Hostess Table	02
Lapis Hostess Table	03
Gazelle Hostess Table	04
Nucleus Hostess Table	05
Lotus Hostess Table	06
Seduction Hostess Table	07
Florentine Hostess Table	08
Intrecciato Hostess Table	09
Elementi Hostess Table	10

Boîte à Papillons	11
Papillon Lamp	12
Shard Console	13
Geometric Turquoise Mirror	14
Poseidon Hostess Table	15
Aphrodite Hostess Table	16
Nereus Hostess Table	17
Tree of Life Mirror	18
Espejo Mirror	19
Cascade Console	20

Turquoise Hostess Table

Made using solid brass and turquoise semiprecious gemstone in a mosaic pattern. These eye catching tables add a sophisticated edge to their surroundings making them a standout feature for any room.

Materials: Turquoise and Brass



Dia: 30cm
Height: 42cm





Nephrite Hostess Table

Made using solid brass and Nephrite semiprecious gemstone in a mosaic pattern. These eye catching tables add a sophisticated edge to their surroundings making them a standout feature for any room.

Materials: Nephrite and Brass



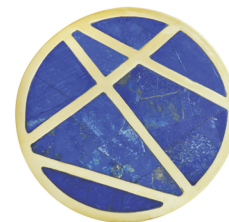
Dia: 30cm
Height: 42cm



Lapis Lazuli Hostess Table

Made using solid brass and Lapis Lazuli semiprecious gemstone in a mosaic pattern. These eye catching tables add a sophisticated edge to their surroundings making them a standout feature for any room.

Materials: Lapis Lazuli and Brass



Dia: 30cm
Height: 42cm





Gazelle Hostess Tables (Tall and Short)

Formed with Lapis Lazuli that adds a rich touch of color and solid brass that lends a delicate form to this regal piece.

Materials: Lapis Lazuli and Brass



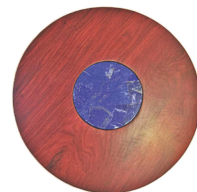
Dia: 31cm Dia: 31cm
Height: 66cm Height: 56cm



The Nucleus Table

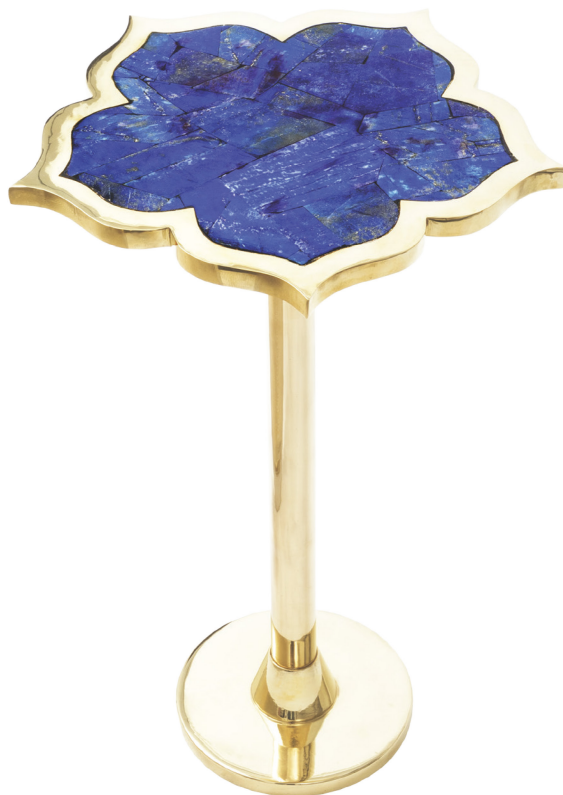
A circular rosewood surface has a nucleic center formed of lapis lazuli and a base made of solid brass.

Materials: Rosewood Marquetry, Brass and Lapis Lazuli.



Dia: 42cm
Height: 56cm





Lotus Hostess Table

Here the stunning lapis, blooms into a mesmerizing lotus, while the anchoring gold brass stem adds to the mystery, against the contrasting deep blue.

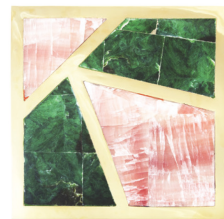


Dia: 38.1cm
Height: 57.15cm
Weight: ~8kg



Seduction Hostess Table

Tango for two, where mysterious nephrite and the blooming pink calcite, can't help but give into the gravitational pull.



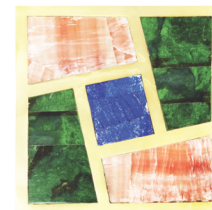
top(sq) 33X33cm
Height: 57.5cm
Weight: ~9kg





Florentine Hostess Table

An ode to Florence, where lapis represents the Arno River and the nephrite and calcite form the gardens and piazzas surrounding it.



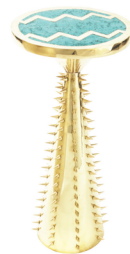
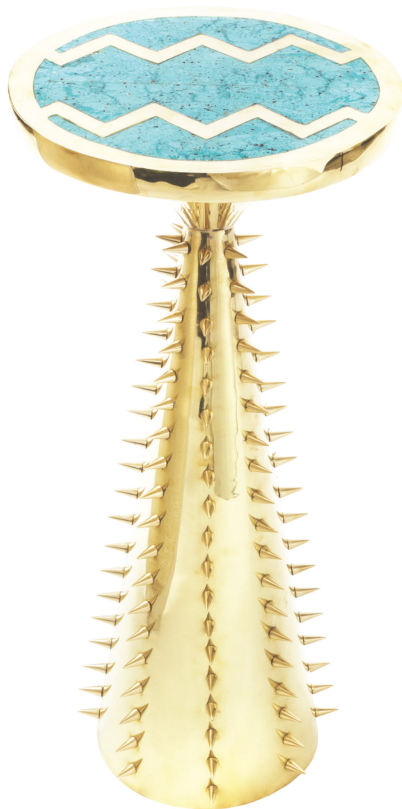
top(sq): 33X33cm
Height: 57.15cm
Weight: ~9kg





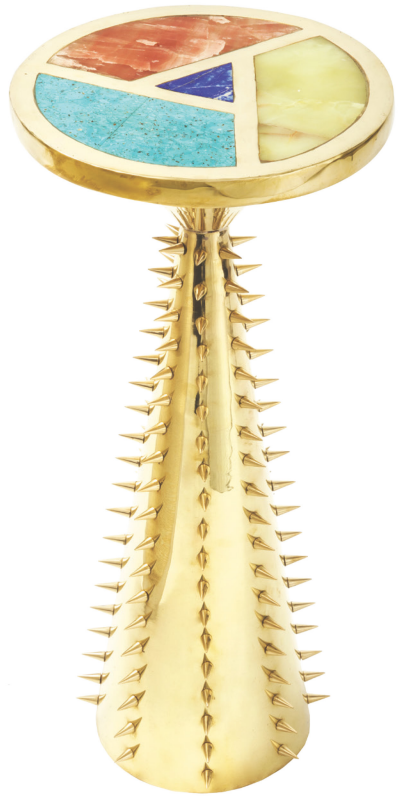
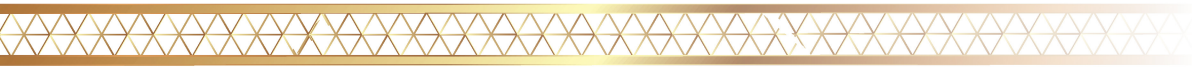
Intrecciato Hostess Table

The entrapped turquoise amongst the brass and its tentacles



Dia: 30.5cm
Height: 67.3cm
Weight: ~8.5kg

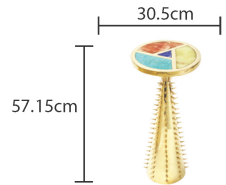




Dia 30.5cm
Height: 57.15cm
Weight: ~7kg

Elementi Hostess Table

This table echos the four elements of earth, the elements swirl, from turquoise, pink calcite and serpentine, to the stationary lapis lazuli.

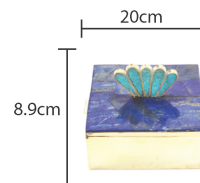


Boîte à Papillons

The butterfly box uses the magnificence of the many blues of lapis lazuli while contrasting it to the delicate brass coated turquoise wings.



top(sq lid): 20X21.6cm
fan: 7.6X12.7cm
Height: 8.9cm
Weight: ~3kg





Papillon Lamp

The perched butterfly underneath all the worlds golden glory. This lamp is a glorious brass masterpiece, with its intriguing serpentine and calcite butterfly.



Base :
Width: 40.6cm
Height: 8.9cm
Depth: 20.3cm

Shade :
Width: 45.7cm
Height: 29.2cm
Depth: 20.3cm

Body :
Width: 22.8cm
Height: 38.1cm
Depth: 5.1cm

Weight: ~13kg

45.7cm

76.2cm





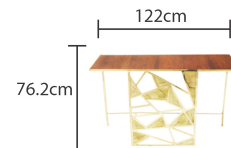
Shard Console

This delicate console deceives the eyes, with the powerful vivid serpentine shards holding the focus, while the fragile brass frame makes one wonder of its own quiet dominance.



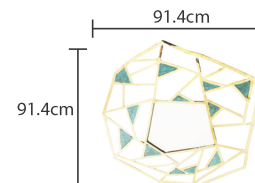
Length: 122cm
Depth: 40.6cm
Height: 76.2cm
Weight: ~24kg

Shard-Panel :
Height: 76.2cm
Width: 58.4cm





Width: 91.4cm
Height: 91.4cm
Weight: ~7kg



Geometric Turquoise Mirror

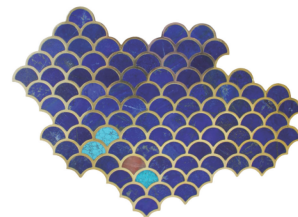
A unique mirror with angular qualities, embedded with turquoise.



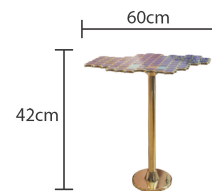
Poseidon Hostess Table

Inspired by the ocean in every way, the Poseidon hostess table pays homage to its rippling waves with a tabletop that consists of an inorganic pattern of scales bejeweled with rich lapis lazuli interspersed with shimmering turquoise and coral calcite. From Olympus, straight to your home

Materials: Turquoise, Lapis Lazuli, Pink Calcite and Brass



Height: 42cm



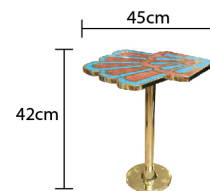
Aphrodite Hostess Table

Immortal and Powerful, hailing from Olympus, we bring you our new jewel table. Aphrodite has the power to make you fall in love. Born from the foam in the waters in Paphos. The top forms a clam shell finished with Turquoise and Pink Calcite and embellished off with a single piece of Mother of Pearl.

Materials: Turquoise, Pink Calcite, Mother of Pearl and Brass



Height: 42cm





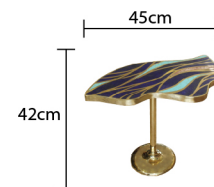
Nereus Hostess Table

Our beloved Nereus channels the age-old, wise sea spirit of the Aegean Sea. Born of the marriage of the aquatic and the terrestrial, our Nereus table effortlessly sculpts the materiality of Pink Calcite, Lapis Lazuli and Turquoise to manifest the free-flowing grace of the oceanic shapeshifter. Gold waves trace out and emphasise this powerful dance.

Materials: Turquoise, Pink Calcite, Lapis Lazulli and Brass



Height: 42cm





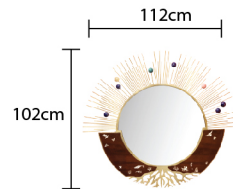
Tree of Life Mirror

Tree of Life Mirror. From the Tree of Life each leaf must fall. The green, the gold, the great, the small. Each one in God's own time He'll call. With perfect love, He gathers all. Gemstone, Brass, Wood, Mother of Pearl.

Materials: Brass, Rose Wood, Mother of Pearl, Pink Calcite, Lapis Lazulli, Turquoise, Serpentine.



Height: 102cm

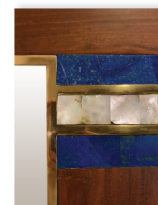




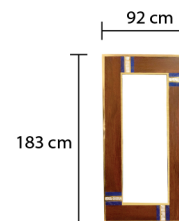
Espejo Mirror

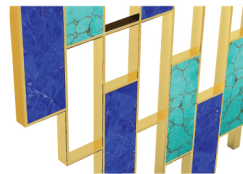
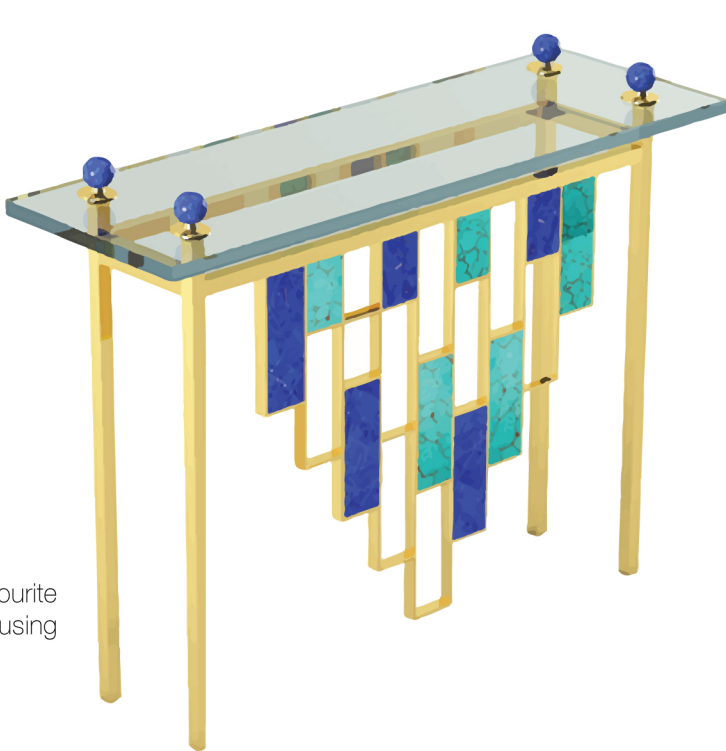
Espejo. Bespoke Mirror. We create personalised one off pieces for our favourite clients. This mirror is a personal story, told by us using rosewood, brass, lapis and mother of Pearl.

Materials: Brass, Rose Wood, Mirror, Mother of Pearl and Lapis Lazulli.

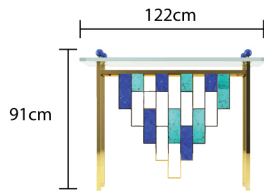


Height: 183cm





Height: 91cm



Cascade Console

We create personalised one off pieces for our favourite clients. This console is a personal story, told by us using Brass, Lapis, Turquoise and Lucite.

Materials: Brass, Lapis Lazulli, Turquoise and Lucite.

KOHR by Arsalan A. Khan reserves all rights to this catalogue
and any further distribution or use of its contents may be done
only with prior written consent.

www.kohr.co.uk



COMMENTS